



GMS KELOA

**Self-Propelled Self-Elevating
Jackup Barge**

ABS A1, + PAS

Owner & Operator: Gulf Marine Services | Year of Build: 2008

Maintenance & Commissioning

Well Intervention

Heavy Lift & Decommissioning

Wind Turbine Installation & Maintenance

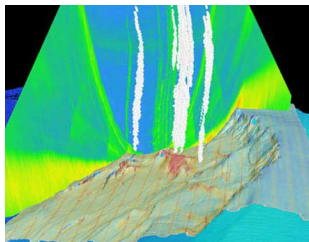


Chartering
chartering@gmsplc.com

STANDARD SPECIFICATIONS



BESPOKE OPTIONAL CAPABILITIES



**GEOTECHNICAL
& GEOPHYSICAL
SUPPORT**



**SPLASH ZONE /
SUBSEA
OPERATIONS**



DECK EXTENSION



**ADDITIONAL
PERMANENT LIVING
QUARTERS**

GMS KELOA SPECIFICATIONS

Main Particulars		Leg Design		Tank Capacities		Fire & Gas Detection System	
LOA / Length BP	43.20 m	Leg Design	4 x Watertight Tubular Legs	Fresh Water	216.12 m ³	Fire Detection System	Consilium / Salwico CS400
Beam	34.80 m	Leg Length	67.9 m	Fuel Oil	68.72 m ³	Gas Detection System	MX 52 Oldham
Depth	4.10 m	Max Water Depth	45 m	Ballast Water	580.95 m ³		
Sailing Draft inc. Spudcans	4.45 m	Spudcan Area	27.3 m ² each	Lube Oil	7.70 m ³		
GRT	2910 t			Dirty Oil	9.63 m ³		
Deck Area	650 m ²			Sewage	15.40 m ³		
Deck Loading	5 t / m ²						

Deck Equipment		Propulsion & Generators		Accommodation	
Anchor	1 x 1.68 t Storm Anchor	Generator Sets	Caterpillar, 3 x 800 kw	Single Cabins	6
Winches	2 x 80 KN	Emergency Generators	1 x 99 kw	2 Berth Cabins	34
Wire Capacity	32 mm, 4 x 400 m	Azimuth Thrusters	Aquamaster, 2 x 725 kw	4 Berth Cabins	19
Cranes	Liebherr 45 t @ 26 m, 5 t @ 30 m Liebherr 27.5t @ 10m, 1.5t @36.5 m	Tunnel Thrusters	Kamewa, 2 x 260 kw	Total POB	150*
		Speed	4 Knots	Hospital	1
		Water Maker	RO 2 x 25 t / day	Off ce Conference Area	100 m ²
				<i>*POB may be expanded using temporary accommodation units on deck and/or room configuration can be tailored to suit client requirements</i>	

Jacking System		Safety Equipment		Helideck	
Jacking Units	4 (BLM Rack and Pinion)	Rescue Boat	6 persons	Aircraft	Bell 212 Bell 412 CAP 437 CAAP 71
Jacking Speed	0.70 m / min	Lifeboats	2 x 102 persons	Fire Fighting System	AFFF
Air Gap (Max)	25 m	Liferafts	8 x 39 persons, 2 x 25 persons	Diameter	17 m
Max Bearing Pressure	42.46 t / m ²	CO ₂ System	Engine & Galley & Emergency Gen. Room		
Leg Length	67.9 m	Sprinkle System	Accommodation living quarters and offices deck		

KEY SPECIFICATIONS OF ENTIRE GMS FLEET

Name of Vessel	Propulsion	Standard POB	Leg Length	Variable Load (VDL) Elevated/Jacking	Deck Area	Main Crane Capacity
Kamikaze	Self Propelled	150	67.9m	750t / 450t	650 m ²	36t
Kawawa	Self Propelled	150	67.9m	750t / 450t	650 m ²	45t
Kikuyu	Self Propelled	150	67.9m	750t / 450t	650 m ²	45t
Kudeta	Self Propelled	150	67.9m	750t / 450t	650 m ²	45t
Keloa	Self Propelled	150	67.9m	750t / 450t	650 m ²	45t
Pepper	Self Propelled	150	76.9m	800t / 900t	800 m ²	75t
Shamal	DP2 Self Propelled	150	75m	1,550t / 900t	800 m ²	150t
Scirocco	DP2 Self Propelled	150	75m	1,550t / 900t	800 m ²	150t
Sharqi	DP2 Self Propelled	150	75m	1,550t / 900t	800 m ²	150t
Endurance	DP2 Self Propelled	210	104m	1,855t / 1,855t	1035 m ²	300t
Endeavour	DP2 Self Propelled	246	94.2m	1,650t / 1,650t	1035 m ²	230t
Enterprise	DP2 Self Propelled	194	104m	1,750t / 1,750t	1035 m ²	400t
Evolution	DP2 Self Propelled	150	94.2m	1,700t / 1,700t	667 m ²	200t

COMPARATIVE VESSEL CAPABILITIES

Description of capabilities	GMS Fleet	Jackup Drilling Rigs	Semi-sub/ Construction Vessels	Accommodation Rigs
Construction & Maintenance				
Construction & installation support	✓	×	✓	×
Maintenance support	✓	×	✓	×
Diving support	✓	✓	×	×
Accommodation	✓	×	✓	✓
Remove/decommission topside modules	✓	×	✓	×
Well Servicing & EOR				
Coiled tubing	✓	✓	×	×
Wireline	✓	✓	×	×
Well workover	✓	✓	×	×
Well testing/ early production	✓	✓	×	×
Wind				
Installation	✓	×	✓	×
Maintenance & repair	✓	×	✓	×

GULF MARINE SERVICES PLC



Rest of the World

Office 403, International Tower
24th (Karama) Street
PO Box 46046
Abu Dhabi, UAE
T +971 2 502 8888
F +971 2 555 3421

Saudi Arabia

2nd Floor, Abdullah Fouad Tower
King Fahd Road, Al Khobar
Eastern Province
PO Box 31411, KSA
T +966 13 8064070
F +966 13 8102100

Qatar

11th Floor, Marina Twin
Towers Street 305, Lusail
P.O. Box 301477
Doha, Qatar
T +971 2 502 8801
F +971 2 555 3421